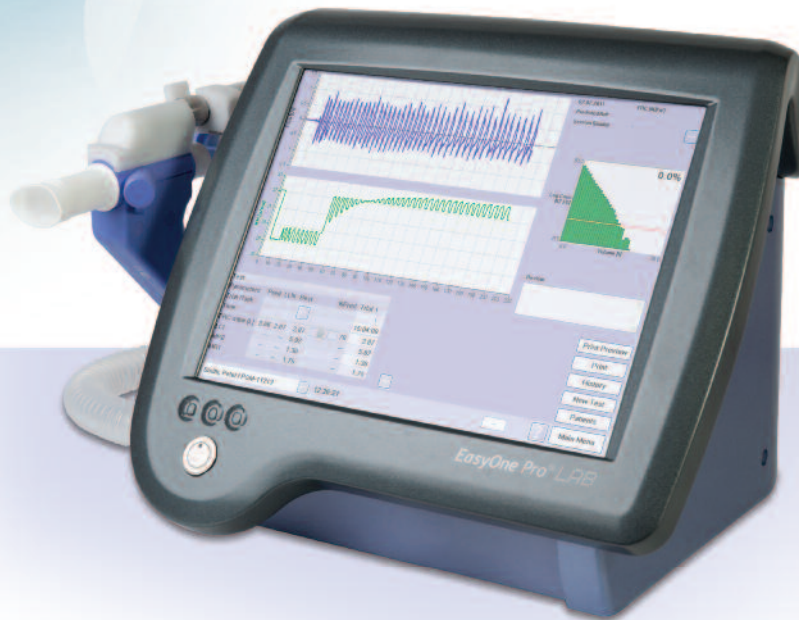




# EasyOne Pro<sup>®</sup> LAB

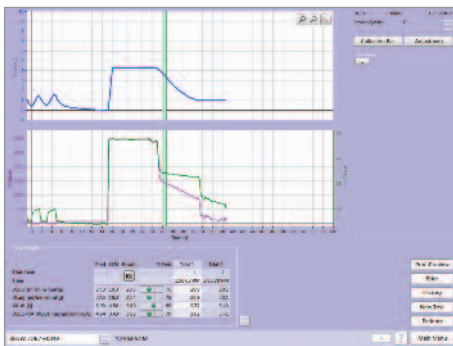
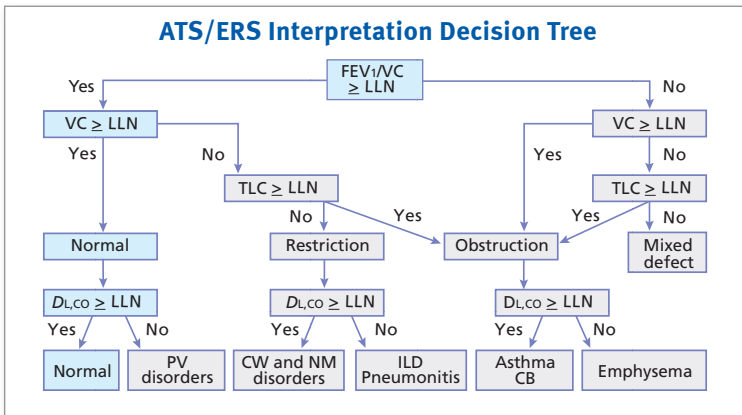
*Multiple-breath nitrogen washout to obtain complete lung volumes,  
FRC and LCI (lung clearance index)*



# Features

## EasyOne Pro LAB offers improved efficiency and quality of care by providing complete pulmonary function testing on site

- Multiple-Breath N<sub>2</sub> washout for FRC, RV, TLC, LCI
- Single Breath CO Diffusion (DLCO)
- Spirometry
- Flexible EMR capabilities
- No warm-up time
- High-resolution color touch screen
- Automatic and fast calibration for each test performed
- Automated ATS/ERS interpretation
- Challenge testing with manitol and methacholine protocols
- Wide range of data export options
- Easy raw data export for scientific use
- No service contracts
- Easy software upgrades
- Remote support capability



Single breath DLCO measurement

## Specifications

### Flow/Volume Sensor

**Type:** Ultrasonic transit-time

**Range:** ±16 l/s

**Resolution:** 4 ml/s

**Accuracy:** ±2% or 0.02 l/s

**Resistance:** < 1.5 cmH<sub>2</sub>O/l/s at 12 l/s

### CO Sensor

**Type:** Non-dispersive infrared

**Range:** 0 to 0.35%

**Resolution:** 0.0001%

**Accuracy:** < 0.001%

### Tracer Gas Sensor (Helium, N<sub>2</sub>)

**Type:** Ultrasonic transit-time

**Range:** 0 to 50%, 0 to 100%

**Resolution:** 0.01%, 0.05%

**Accuracy:** 0.05%, 0.2%

### CO<sub>2</sub> Sensor

**Type:** Non-dispersive infrared

**Range:** 0 to 15%

**Resolution:** 0.005%

**Accuracy:** ±0.05% (from 0 to 5%)

### Standards

**Quality System:** ISO 9001, ISO 13485

**FDA:** 510(k) market clearance

**MDD 93/42/EEC:** CE marked

**Electrical:** EN 60601-1, EN 60601-1-2

### Electrical and Environmental Requirements

**Supply:** 100 to 240 VAC, 50/60 Hz

**Temperature:** 10 to 40°C

**Humidity:** 30 to 75% (non condensing)



nddmedical

nddmedical

nddmed

nddmedical

