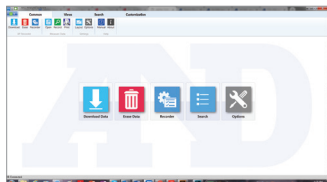


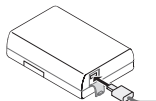
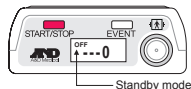
A INSTALLATION

1. Visit https://www.aandd-ps.com/inquiry/abpm_software to register your device and download the **latest** software version. After the download, please unzip the folder. Or insert the disc to install the software and follow the installation instructions.

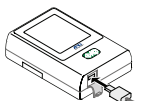


B CONNECTING THE MONITOR

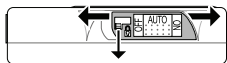
1. Connect the micro USB cable between the monitor and computer.
2. The buzzer will sound and the following symbol appears on the OLED display.
3. The monitor enters its standby mode.
4. If using the TM-2441, ensure the switch on the side is "On" and lock it.



TM-2440



TM-2441



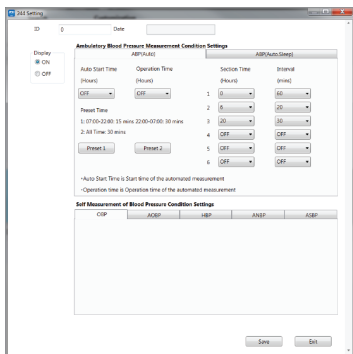
C PROGRAMMING THE MONITOR

1. Open the A&D software
2. Click on “**Recorder**”.
3. Select Protocol, Referring Physician, etc. and click **OK**.
The device is now programmed.



4. Disconnect the PC interface cable from the device.

Note: We recommend connecting your monitor to your PC before opening the A&D software.



PATIENT TIPS

DO'S

1. When inflation begin, relax arm, stay still and quiet.
2. Ensure the tube is not compressed or kinked.

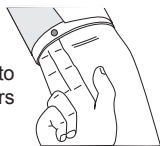
DO NOT

1. Operate heavy machinery. Vibrations may disrupt measurements.
2. Remove batteries during session.
3. Drop or shock the device.
4. Expose the device to rain or water.
5. Arrange the cuff hose around your neck during sleep.

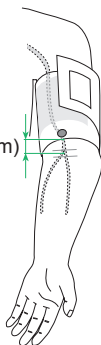
D SETTING UP THE PATIENT

1. Wrap the cuff around the patients' upper arm (choose the correct cuff size)

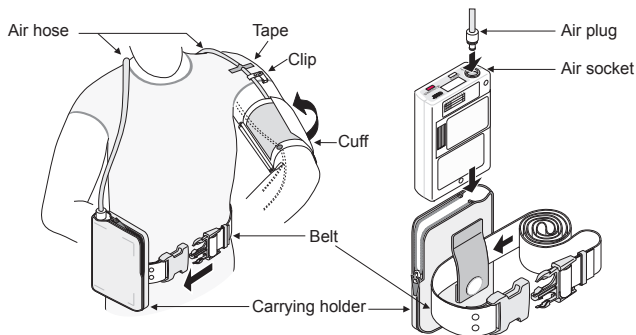
Have room to insert two fingers



0.5" (1-2cm)



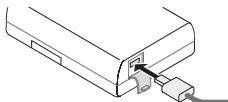
2. Position tube around neck and attach monitor to the belt loop.



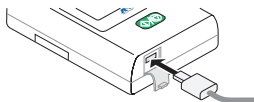
3. Press the start button to take first measurement. The pre-set parameters will automatically begin.

E DOWNLOADING THE DATA

1. Open the micro USB terminal on the monitor and connect the USB cable.



TM-2440



TM-2441

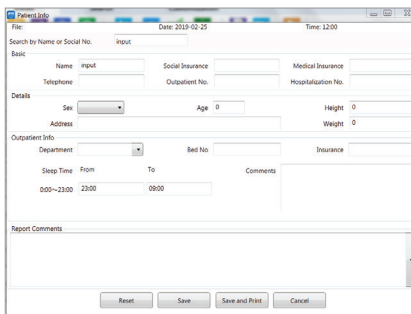
2. Open the A&D Ambulatory Analysis Software from your computer.

Note: The device needs to be plugged in before opening the software.

3. Click the “**Download**” icon.



4. After the download is complete, enter the patient information. Please input patient sleep time.



The screenshot shows a software window titled "Patient Info" with a date of 2019-02-25 and time of 12:00. The form is divided into several sections:

- Search by Name or Social No.:** A single input field.
- Basic:** Fields for Name, Social Insurance, Medical Insurance, Telephone, Outpatient No., and Hospitalization No.
- Details:** Fields for Sex (dropdown), Age, Height, Address, and Weight.
- Outpatient Info:** Fields for Department (dropdown), Bed No., and Insurance.
- Sleep Time:** A table with columns for From and To, and a Comments field. The example shows a range from 23:00 to 09:00.
- Report Comments:** A large text area for notes.
- Buttons:** Reset, Save, Save and Print, and Cancel.

5. Click on “**Views**” tab.

Views

6. Click on the “**Layout**”



icon.

7. Choose your report settings, then apply and save.

Template Select

Template : Standard Print Template

Layout

- Summary
- Data
- Partial Data
- BP Data
- Histogram
- Pie Graph
- Trend Graph
- Scatterplot

Summary Settings

- BP Avg
- Awake Avg
- Sleep Avg
- Max
- Percentage
- Circadian
- CV %
- Pulse
- Morning
- Comment

Trend Graph Sett

- Acceleration
- Activity

Apply Save

8. Click on the “**Print**” icon to print results.

Note: To create a PDF of report, choose “Adobe PDF” as printer.

CUFF GUIDE

Cuff	Size
Small Cuff	5.9-8.7” (15-22cm)
Medium Cuff	7.8-12.2” (20-31cm)
Large Cuff	11.0-15.0” (28-38cm)
Extra Large Cuff	14.2-19.7” (36-50cm)